

02-DEC-2025 11:17
\\TDOT04NAS002.tdot.state.tn.us\04Shared\Design\DESIGN\PROJECTS\Gibson County\Project\001A.dgn

ROADWAY INDEX

SHEET NAME

SHEET NO.

DWG.

REV.

DESCRIPTION

SIGNATURE SHEET	ROADWAY-SIGN2
SIGNATURE SHEET	ROADWAY-SIGN1
TITLE SHEET	1
ROADWAY INDEX AND STANDARD ROADWAY DRAWINGS	1A
STANDARD TRAFFIC DESIGN AND STRUCTURE DRAWINGS	1A1
PROJECT COMMITMENTS	1B
ESTIMATED ROADWAY QUANTITIES	2
TYPICAL SECTIONS AND PAVEMENT SCHEDULE	2B - 2B1
GENERAL NOTES.....	2C
SPECIAL NOTES.....	2D
ENVIRONMENTAL NOTES.....	2E - 2E1
TABULATED QUANTITIES	2F - 2F1
RIGHT-OF-WAY NOTES, UTILITY NOTES AND UTILITY OWNERS	3
PROPERTY MAP(S) AND RIGHT-OF-WAY ACQUISITION TABLE(S).....	3A, 3B-3B1
PRESENT LAYOUT	4
RIGHT-OF-WAY DETAILS	4A - 4A1
PROPOSED LAYOUT	4B
PROPOSED PROFILE	4C
SIDE ROAD PROFILE	5
PRIVATE DRIVE, BUSINESS, AND FIELD ENTRANCE PROFILE(S).....	6
DRAINAGE MAP	7
CULVERT SECTIONS	8
EROSION PREVENTION AND SEDIMENT CONTROL PLANS	9-13
ROADWAY CROSS SECTIONS	14 – 32
SIDE ROAD CROSS SECTIONS	33 – 42
TRAFFIC CONTROL PLANS	T1 – T5
BRIDGE PLANS.....	B-1
STORM WATER POLLUTION PREVENTION PLAN (SWPPP) PLANS.....	S-1
UTILITIES PLANS.....	U1–1
NOTE: THE ALPHABETICAL LETTERS “I”, “O” & “Q” ARE NOT USED IN THE NUMBERING OF SHEETS.	

ROADWAY-SIGN2

ROADWAY-SIGN1

1

1A

1A1

1B

2

2B - 2B1

2C

2D

2E - 2E1

2F - 2F1

3

3A, 3B-3B1

4

4A - 4A1

4B

4C

5

6

7

8

9-13

14 – 32

33 – 42

T1 – T5

B-1

S-1

U1–1

STANDARD ROADWAY TITLE SHEET, ABBREVIATIONS, AND LEGENDS

RD-TP-1

10-01-24

STANDARD ROADWAY DRAWINGS TITLE SHEET

RD-A-1

02-20-20

STANDARD ABBREVIATIONS A THROUGH L

RD-A-2

STANDARD ABBREVIATIONS M THROUGH Z

RD-L-1

02-20-20

STANDARD LEGEND

RD-L-1A

STANDARD LEGEND

RD-L-2

02-20-20

STANDARD LEGEND FOR UTILITY INSTALLATIONS

RD-L-5

07-30-24

STANDARD LEGEND FOR EROSION PREVENTION AND SEDIMENT CONTROL

RD-L-6

02-20-20

STANDARD LEGEND FOR EROSION PREVENTION AND SEDIMENT CONTROL

RD-L-7

02-20-20

STANDARD LEGEND FOR EROSION PREVENTION AND SEDIMENT CONTROL

ROADWAY DESIGN STANDARD

RD11-TS-1

06-28-19

DESIGN STANDARDS FOR LOW-VOLUME ROADS

RD11-TS-1A

06-28-19

DESIGN STANDARDS FOR LOCAL ROADS AND STREETS

RD11-S-11

DESIGN AND CONSTRUCTION DETAILS FOR ROADSIDE SLOPE DEVELOPMENT

RD11-S-11A

ROADSIDE DITCH DETAILS FOR DESIGN AND CONSTRUCTION

AQUATIC ORGANISM PASSAGE (AOP) DESIGN, PIPE CULVERTS, AND ENDWALLS

D-FLU-3

04-14-25

BRIDGE END DRAIN FLUME DETAILS

D-PB-1

03-01-23

STANDARD DETAILS FOR CONCRETE PIPE INSTALLATION

D-PE-48A

06-28-19

TYPE "U" CROSS DRAIN ENDWALL FOR 48" PIPE WITH STEEL PIPE GRATE (FOR 3:1, 4:1 & 6:1 SLOPES)

D-PE-48B

06-28-19

TYPE "U" CROSS DRAIN ENDWALL FOR 48" PIPE, BILL OF STEEL AND PRECAST NOTES

D-SEW-1A

07-07-23

TYPE "SAFETY" SIDE ENDWALL WITH STEEL PIPE GRATE, FOR 15" THRU 48" PIPES, 6:1 SLOPE

D-PE-99

03-04-21

TYPE "U" CROSS DRAIN ENDWALL DETAILS, PIPE GRATE & SKEWED CONNECTION

D-PEW-1

PROTECTED ENDWALLS FOR ROUND & OVAL PIPES (PIPE SIZES 18" TO 72", ALL SKEWS, 2:1 & 3:1 SLOPES)

D-PEW-2

PROTECTED ENDWALLS FOR ROUND PIPES DETAILS & QUANTITIES (PIPE SIZES 18" TO 72", ALL SKEWS, 2:1 & 3:1 SLOPES)

CATCH BASINS AND MANHOLES

D-CB-38SB

03-04-21

STANDARD 4' X 4' SQUARE CONCRETE NO. 38 CATCH BASIN

ROADWAY, PAVEMENT APPURTENANCES, AND FENCES

RP-R-1

04-21-25

STANDARD RAMP DETAILS FOR ROADWAYS AND DRIVEWAYS

RP-D-15

04-01-25

DETAILS OF STANDARD CONCRETE DRIVEWAYS

RP-D-16

04-01-25

DETAILS OF LOWERED STANDARD CONCRETE DRIVEWAYS

S-F-1

03-01-23

HIGH VISIBILITY FENCE

SAFETY DESIGN AND GUARDRAILS

S-CZ-1

06-28-19

CLEAR ZONE CRITERIA

STANDARD ROADWAY DRAWINGS

DWG.

REV.

DESCRIPTION

S-PL-1

03-01-23

SAFETY PLAN FOR BARRIER LENGTH OF NEED

S-PL-3

03-01-23

SAFETY PLAN MINIMUM INSTALLATION AT BRIDGE ENDS

S-PL-6

07-30-24

SAFETY PLAN SAFETY HARDWARE PLACEMENT ON OUTSIDE EDGE

S-GR31-1

03-13-25

GUARDRAIL DETAILS

S-GR31-1A

06-28-19

GUARDRAIL AND BLOCK-OUT DETAILS

S-GR31-1B

GUARDRAIL FASTENING HARDWARE

S-GR31-1C

07-07-23

GUARDRAIL GENERAL NOTES AND POST DETAILS

S-GRC-6

07-07-23

GUARDRAIL CONNECTION TO BRIDGE ENDS FOR LOW SPEED ROADWAYS

S-GRT-2P

10-16-20

EARTH PAD FOR TYPE 38 AND TYPE 21 TERMINAL

S-GRT-2R

06-28-19

EARTH PAD FOR TYPE 38 AND TYPE 21 TERMINAL (RETROFIT)

S-GRT-3

06-28-19

TYPE 21 GUARDRAIL END TERMINAL

EROSION PREVENTION AND SEDIMENT CONTROL

EC-STR-2

08-01-12

SEDIMENT FILTER BAG

EC-STR-3B

06-15-21

SILT FENCE

EC-STR-3C

03-01-23

SILT FENCE WITH WIRE BACKING

EC-STR-6

11-30-20

ROCK CHECK DAM

EC-STR-6A

05-06-16

ENHANCED ROCK CHECK DAM

EC-STR-11

03-16-17

CULVERT PROTECTION TYPE 1

EC-STR-11A

08-01-12

CULVERT PROTECTION TYPE 2

EC-STR-19

04-01-08

CATCH BASIN PROTECTION

EC-STR-25

08-01-12

TEMPORARY CULVERT CROSSING, CONSTRUCTION EXIT, CONSTRUCTION FORD

EC-STR-27

08-01-12

TEMPORARY SLOPE DRAIN AND BERM

EC-STR-31

05-04-22

TEMPORARY DIVERSION CHANNEL

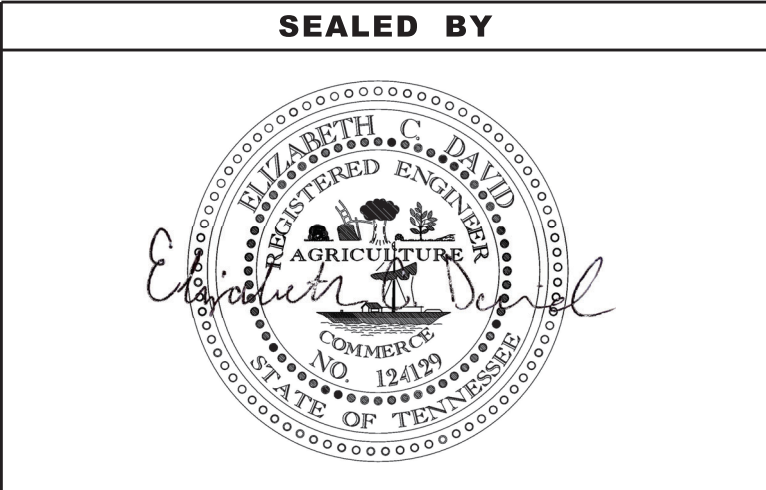
EC-STR-37

06-10-14

SEDIMENT TUBE

TYPE	YEAR	PROJECT NO.	SHEET NO.
P.I.H.	2025	BRZ-2700(60)	1A
PS&E	2025	___BRZ-2700(60)___	1A

REV. 12/02/25: ADDED ROADWAY-SIGN2 SHEET.



STATE OF TENNESSEE
DEPARTMENT OF TRANSPORTATION

ROADWAY INDEX
AND
STANDARD
ROADWAY
DRAWINGS

<div>(1)(2)(3)</div> <div>(3)</div> <div>(3)(4)</div> <div>(3)</div> <div>(3)</div> <div>(3)</div> <div>(3)</div> <div>(3)</div> <div>(3)</div> <div>(5)</div> <div>(6)</div> <div>(7)</div> <div>(8)</div> <div>(8)</div> <div>(8)</div> <div>(3)(10)</div> <div>(11)</div> <div>(3)</div> <div>(3)(12)</div> <div>(11)(14)</div>	ESTIMATED ROADWAY QUANTITIES			
	ITEM NO.	DESCRIPTION	UNIT	QUANTITY 27946-3406-94
	105-01	CONSTRUCTION STAKES, LINES AND GRADES	LS	1
	201-01	CLEARING AND GRUBBING	LS	1
	202-02.01	REMOVAL OF PIPE (12" RCP ,36+08.61 OFF. -16.23')	L.F.	22
	202-02.02	REMOVAL OF PIPE (12" RCP,36+77.67 OFF. -16.26')	L.F.	21
	202-02.03	REMOVAL OF PIPE (12" RCP,FROM: 35+44.96 TO: 35+92.50 OFF. -19.60')	L.F.	43
	202-02.04	REMOVAL OF PIPE (48" RCP, STA. 43+27.34 OFF. 24.99')	L.F.	32
	202-03	REMOVAL OF RIGID PAVEMENT, SIDEWALK, ETC.	S.Y.	132
	202-03.01	REMOVAL OF ASPHALT PAVEMENT	S.Y.	2540
	203-01	ROAD & DRAINAGE EXCAVATION (UNCLASSIFIED)	C.Y.	6540
	203-03	BORROW EXCAVATION (UNCLASSIFIED)	C.Y.	8700
	203-04	PLACING AND SPREADING TOPSOIL	C.Y.	1366
	203-06	WATER	M.G.	71
	209-05	SEDIMENT REMOVAL	C.Y.	68
	209-08.02	TEMPORARY SILT FENCE (WITH BACKING)	L.F.	1573
	209-08.03	TEMPORARY SILT FENCE (WITHOUT BACKING)	L.F.	315
	209-08.07	ROCK CHECK DAM	EACH	7
	209-08.08	ENHANCED ROCK CHECK DAM	EACH	6
	209-09.01	SANDBAGS	BAG	25
	209-09.03	SEDIMENT FILTER BAG (15' X 15')	EACH	6
	209-20.04	POLYETHYLENE SHEETING (10 MIL.)	S.Y.	200
	209-40.33	CATCH BASIN PROTECTION (TYPE D)	EACH	1
	209-65.03	TEMPORARY DIVERSION CHANNEL	L.F.	214
	303-01	MINERAL AGGREGATE, TYPE A BASE, GRADING D	TON	2408
	303-10.01	MINERAL AGGREGATE (SIZE 57)	TON	51
	303-10.04	MINERAL AGGREGATE (SIZE 57)	TON	579
	307-01.08	ASPHALT CONCRETE MIX (PG64-22) (BPMB-HM) GRADING B-M2	TON	381
	402-01	BITUMINOUS MATERIAL FOR PRIME COAT (PC)	TON	5
	402-02	AGGREGATE FOR COVER MATERIAL (PC)	TON	18
	403-01	BITUMINOUS MATERIAL FOR TACK COAT (TC)	TON	2
	407-20.05	SAW CUTTING ASPHALT PAVEMENT	L.F.	68
	411-01.10	ACS MIX(PG64-22) GRADING D	TON	226
	502-04.01	SAWING CONCRETE PAVEMENT (FULL DEPTH)	L.F.	24
	607-03.02	18" CONCRETE PIPE CULVERT (CLASS III)	L.F.	45
	607-09.02	48" CONCRETE PIPE CULVERT (CLASS III)	L.F.	54
	607-39.02	18" PIPE CULVERT (SIDE DRAIN)	L.F.	47
	611-07.01	CLASS A CONCRETE (PIPE ENDWALLS)	C.Y.	8
	611-07.02	STEEL BAR REINFORCEMENT (PIPE ENDWALLS)	LB.	288
	611-07.31	18 IN ENDWALL (SIDE DRAIN)	EACH	2
	611-07.32	24IN ENDWALL (SIDE DRAIN)	EACH	2
	611-07.70	48IN ENDWALL (CROSS DRAIN) 4:1	EACH	1
	611-38.01	CATCH BASINS, TYPE 38, 0' - 4' DEPTH	EACH	1
	621-03.02	18" TEMPORARY DRAINAGE PIPE	L.F.	90
	701-02	CONCRETE DRIVEWAY	S.F.	552
	705-06.01	W BEAM GR (TYPE 2) MASH TL-3	L.F.	25
705-06.26	THRIE BEAM BRIDGE TRANSITION MASH TL-2	EACH	4	
705-06.30	GR TERMINAL (ENERGY ABSORBING) MASH TL-2	EACH	4	
706-01	GUARDRAIL REMOVED	L.F.	151	
707-08.11	HIGH-VISIBILITY CONSTRUCTION FENCE	L.F.	1119	
709-05.05	MACHINED RIP-RAP (CLASS A-3)	TON	251	
709-05.06	MACHINED RIP-RAP (CLASS A-1)	TON	258	
709-05.08	MACHINED RIP-RAP (CLASS B)	TON	664	
712-01	TRAFFIC CONTROL	LS	1	
712-04.01	FLEXIBLE DRUMS (CHANNELIZING)	EACH	16	
712-05.01	WARNING LIGHTS (TYPE A)	EACH	16	
712-05.03	WARNING LIGHTS (TYPE C)	EACH	58	
712-06	SIGNS (CONSTRUCTION)	S.F.	214	
712-07.03	TEMPORARY BARRICADES (TYPE III)	L.F.	204	
713-02.21	SIGN POST DELINEATION ENHANCEMENT	L.F.	7	
713-11.21	P POST SLIP BASE	EACH	1	
713-15.36	REMOVE SIGN, SUPPORT & FOOTING	EACH	8	
713-16.01	CHANGEABLE MESSAGE SIGN UNIT	EACH	2	

ESTIMATED ROADWAY QUANTITIES			
ITEM NO.	DESCRIPTION	UNIT	QUANTITY 27946-3406-94
713-16.20	SIGNS (D3-1 L AND N ST, D3-1 SALEM ST, R1-1 STOP)	EACH	1
713-16.21	SIGNS (PROJECT INFORMATION, I2-5)	EACH	2
716-02.05	PLASTIC PAVEMENT MARKING (STOP LINE)	L.F.	18
716-05.01	PAINTED PAVEMENT MARKING (4" LINE)	L.M.	0.92
717-01	MOBILIZATION	LS	1
740-07.04	GEOGRID REINFORCEMENT TYPE 2	S.Y.	681
740-10.03	GEOTEXTILE (TYPE III)(EROSION CONTROL)	S.Y.	1059
740-10.04	GEOTEXTILE (TYPE IV)(STABILIZATION)	S.Y.	327
740-11.04	TEMPORARY SEDIMENT TUBE 20IN	L.F.	840
801-01.07	TEMPORARY SEEDING (WITH MULCH)	UNIT	74
801-03	WATER (SEEDING & SODDING)	M.G.	90
802-11.01	ACER NEGUNDO (BOX ELDER 2-5FT CNTNR GRWN)	EACH	9
802-11.07	BETULA NIGRA (RIVER BIRCH 2-5FT CNTNR GRWN)	EACH	9
802-11.16	FRAXINUS PENNSYLVANICA (GREEN ASH 2-5FT CNTNR GRWN)	EACH	9
802-11.26	PLATANUS OCCIDENTALIS (SYCAMORE 2-5FT CNTNR GRWN)	EACH	9
803-01	SODDING (NEW SOD)	S.Y.	9813

FOOTNOTES

(1)

SEE GRADING SPECIAL NOTES ON SHEET 2D.

(2)

INCLUDES 36 C.Y. FOR TEMPORARY CONSTRUCTION EXITS. INCLUDES 80 C.Y. FOR TEMPORARY BERM. INCLUDES 41 C.Y. FOR BRIDGE EXCAVATION.

(3)

SEE SUBSECTION 209.07 OF THE STANDARD SPECIFICATIONS FOR MAINTENANCE REPLACEMENT. ALL EROSION PREVENTION AND SEDIMENT CONTROL QUANTITIES ARE TO BE USED AS DIRECTED BY THE TDOT ENGINEER. SEE EPSC PLAN SHEETS FOR FURTHER DETAILS.

(4)

INCLUDES 108 L.F. FOR SEDIMENT FILTER BAGS. INCLUDES 214 L.F. FOR TEMPORARY DIVERSION CHANNEL.

(5)

INCLUDES 450 TONS FOR PRIVATE DRIVE ACCESS DURING CONSTRUCTION.

(6)

TO BE USED FOR PAVEMENT AT BRIDGE ENDS, SEE STD-10-2.

(7)

TO BE USED FOR PIPE UNDER DRIVE ON TRACT 11.

(8)

TO BE USED FOR THE OUTLET ENDWALL FOR THE CROSS DRAIN UNDER L AND N ST.

(9)

TO BE USED FOR THE INLET ENDWALL FOR THE CROSS DRAIN UNDER L AND N ST.

(10)

TO BE USED FOR TEMPORARY CONSTRUCTION EXITS.

(11)

EXTEND TRANSITION SECTION OUT 12.5 FT. TO NOT INTERFERE WITH THE BRIDGE FLUME.

(12)

INCLUDES 196 TONS FOR DIVERSION CHANNEL, INCLUDES 23 TONS FOR CULVERT TYPE ONE PROTECTION, AND INCLUDES 39 TONS FOR BRIDGE FLUMES.

(13)

SEE SHEET T2 FOR SIGN TABULATION.

(14)

THIS CONSTRUCTION SIGNING IS TO BE A MINIMUM. OTHER SIGNS AS DIRECTED BY THE TDOT ENGINEER MAY BE REQUIRED DURING DIFFERENT PHASES. ALL SIGNING SHALL BE IN STRICT ACCORDANCE WITH THE MANUAL ON UNIFORM TRAFFIC CONTROL DEVICES (MUTCD).

(15)

SIGN FACE, SUPPORT INSTALLATION AND HARDWARE TO BE INCLUDED IN ITEM NUMBER. LENGTH OF SIGN SUPPORT IS 15.11FT UTILIZING A P6 SUPPORT TYPE.

(16)

SIGN IS 108" X 48" AND TO BE POSTED AT EACH END OF THE PROJECT PER TM 2403.

(17)

FOR USE AS PERMANENT MARKING ONLY.

(18)

THE CONTRACTOR MAY ELECT TO SUBSTITUTE PREFORMED PLASTIC FOR THERMOPLASTIC. PREFORMED PLASTIC SHALL BE PAID FOR AT THE SAME UNIT PRICE BID FOR THERMOPLASTIC.

(19)

INCLUDES 429 S.Y. FOR TEMPORARY CONSTRUCTION EXITS. INCLUDES 130 S.Y. FOR SEDIMENT FILTER BAGS. INCLUDES 18 S.Y. FOR TYPE 2 CULVERT PROTECTION. INCLUDES 54 S.Y. FOR TYPE 1 CULVERT PROTECTION. INCLUDES 394 S.Y. FOR TEMPORARY DIVERSION CHANNEL. INCLUDES 34 S.Y. FOR BRIDGE FLUMES.

(20)

INCLUDES 8 THOUSAND GALLONS FOR EROSION PREVENTION AND SEDIMENT CONTROL AND 82 THOUSAND GALLONS FOR SOD.

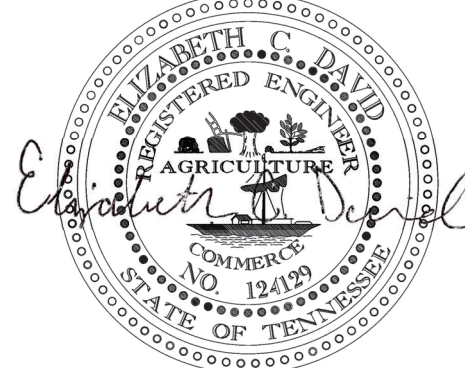
(21)

INCLUDES 1620 S.Y. FOR SPECIAL DITCHES.

TYPE	YEAR	PROJECT NO.	SHEET NO.
P.I.H.	2025	BRZ-2700(60)	2
PS&E	2025	___BRZ-2700(60)___	2

REV. 12/02/25: ADDED ITEM NUMBERS 303-10.04, 740-10.04, AND 740-07.04. ADDED FOOTNOTE 6 AND RENUMBERED FOOTNOTES.

SEALED BY

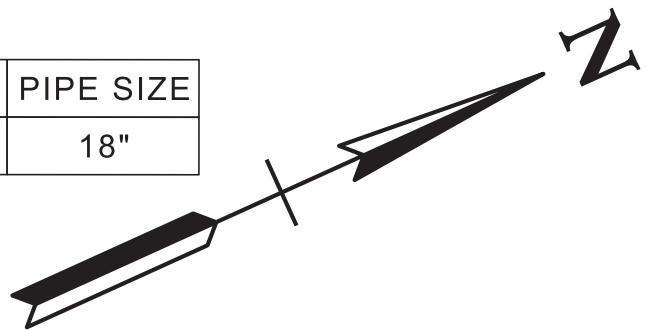


STATE OF TENNESSEE
DEPARTMENT OF TRANSPORTATION

ESTIMATED
ROADWAY
QUANTITIES

CODE	TYPE	CENTERLINE	STATION	OFFSET	GRATE/TOP ELEVATION	INV. IN	FROM STRUCTURE	INV. OUT	TO STRUCTURE	PIPE LENGTH	PIPE SIZE
CB-1A	4' X 4'	SALEM ST	35+90.00	-20.77	407.46	404.21	D1	403.52	OUT	45.00'	18"

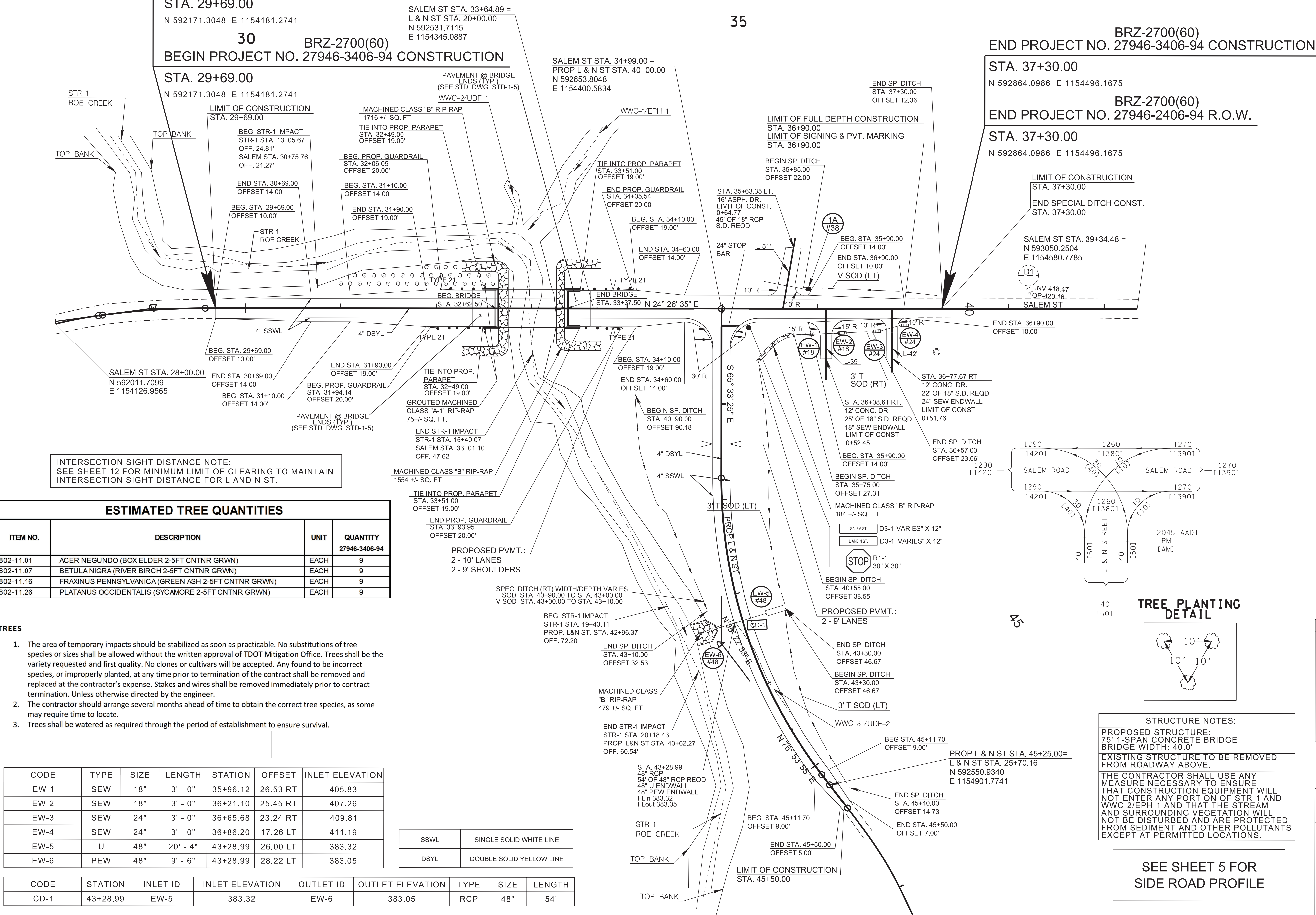
BRZ-2700(60)
BEGIN PROJECT NO. 27946-2406-94 R.O.W.



TYPE	YEAR	PROJECT NO.	SHEET NO.
PRELIM.	2022	27946-1406-94	4B
R.O.W.	2024	BRZ-2700(60)	4B
P.I.H.	2025	BRZ-2700(60)	4B
PS&E	2025	BRZ-2700(60)	4B

REV. 08/01/24: ADDED TREE PLANTING CELLS, NOTES, AND DETAIL.

REV. 12/02/25: ADDED PAVEMENT AT BRIDGE ENDS LABEL.



INTERSECTION SIGHT DISTANCE NOTE:
SEE SHEET 12 FOR MINIMUM LIMIT OF CLEARING TO MAINTAIN
INTERSECTION SIGHT DISTANCE FOR L AND N ST.

ESTIMATED TREE QUANTITIES

ITEM NO.	DESCRIPTION	UNIT	QUANTITY
802-11.01	ACER NEGUNDO (BOX ELDER 2-5FT CNTNR GRWN)	EACH	9
802-11.07	BETULA NIGRA (RIVER BIRCH 2-5FT CNTNR GRWN)	EACH	9
802-11.16	FRAXINUS PENNSYLVANICA (GREEN ASH 2-5FT CNTNR GRWN)	EACH	9
802-11.26	PLATANUS OCCIDENTALIS (SYCAMORE 2-5FT CNTNR GRWN)	EACH	9

TREES

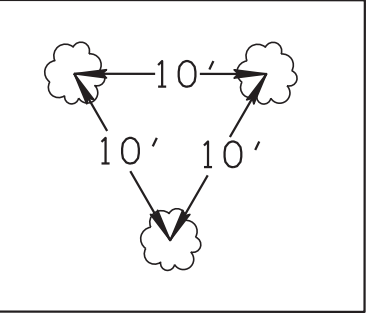
- The area of temporary impacts should be stabilized as soon as practicable. No substitutions of tree species or sizes shall be allowed without the written approval of TDOT Mitigation Office. Trees shall be the variety requested and first quality. No clones or cultivars will be accepted. Any found to be incorrect species, or improperly planted, at any time prior to termination of the contract shall be removed and replaced at the contractor's expense. Stakes and wires shall be removed immediately prior to contract termination. Unless otherwise directed by the engineer.
- The contractor should arrange several months ahead of time to obtain the correct tree species, as some may require time to locate.
- Trees shall be watered as required through the period of establishment to ensure survival.

CODE	TYPE	SIZE	LENGTH	STATION	OFFSET	INLET ELEVATION
EW-1	SEW	18"	3' - 0"	35+96.12	26.53 RT	405.83
EW-2	SEW	18"	3' - 0"	36+21.10	25.45 RT	407.26
EW-3	SEW	24"	3' - 0"	36+65.68	23.24 RT	409.81
EW-4	SEW	24"	3' - 0"	36+86.20	17.26 LT	411.19
EW-5	U	48"	20' - 4"	43+28.99	26.00 LT	383.32
EW-6	PEW	48"	9' - 6"	43+28.99	28.22 LT	383.05

CODE	STATION	INLET ID	INLET ELEVATION	OUTLET ID	OUTLET ELEVATION	TYPE	SIZE	LENGTH
CD-1	43+28.99	EW-5	383.32	EW-6	383.05	RCP	48"	54'

SSWL	SINGLE SOLID WHITE LINE
DSYL	DOUBLE SOLID YELLOW LINE

TREE PLANTING DETAIL



STRUCTURE NOTES:

PROPOSED STRUCTURE:
75' 1-SPAN CONCRETE BRIDGE
BRIDGE WIDTH: 40.0'
EXISTING STRUCTURE TO BE REMOVED
FROM ROADWAY ABOVE.
THE CONTRACTOR SHALL USE ANY
MEASURE NECESSARY TO ENSURE
THAT CONSTRUCTION EQUIPMENT WILL
NOT ENTER ANY PORTION OF STR-1 AND
WWC-2/EPH-1 AND THAT THE STREAM
AND SURROUNDING VEGETATION WILL
NOT BE DISTURBED AND ARE PROTECTED
FROM SEDIMENT AND OTHER POLLUTANTS
EXCEPT AT PERMITTED LOCATIONS.

SEE SHEET 5 FOR
SIDE ROAD PROFILE

SEALED BY

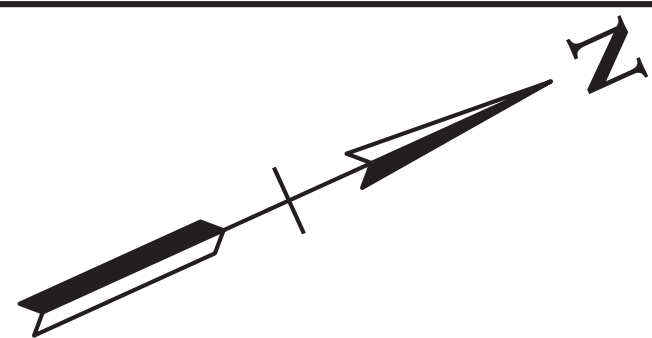


COORDINATES ARE NAD 83(1995), ARE
DATUM ADJUSTED BY THE FACTOR
OF 1.00006 AND TIED TO THE TGRN.
ALL ELEVATIONS ARE REFERENCED
TO THE NAVD 1988 WITH GEOID 03 MODEL.

STATE OF TENNESSEE
DEPARTMENT OF TRANSPORTATION

PROPOSED
LAYOUT
STA. 28+00.00
TO STA. 39+34.48
SCALE: 1"=50'

EROSION
PREVENTION &
SEDIMENT CONTROL
(EPSC) PLANS
STA.28+00 TO STA.39+34.48
SCALE: 1"=50'



N 592864.0986 E 1154496.1675

30

35

SALEM ST STA. 34+99.00 =
PROP L & N ST STA. 40+00.00
N 592653.8034
E 1154400.5848

SALEM ST STA.
N 593050.2504
E 1154580.7785

EXISTING CONTOUR
PROPOSED CONTOUR

Outfall	Drainage	Average
1	3.461 AC	6.984 %
2	.486 AC	4.488 %

EROSION
PREVENTION &
SEDIMENT CONTROL
(EPSC) PLANS
STA.28+00 TO STA.39+34.48
SCALE: 1"=50'

N 592171.3048 E 1154181.2741

CODE	STATION	INLET ID	INLET ELEVATION	OUTLET ID	OUTLET ELEVATION	TYPE	SIZE	LENGTH
CD-1	43+28.99	EW-5	383.32	EW-6	383.05	RCP	48"	54'

1. THE DISTURBED AREA WITHIN THE R.O.W. IS LIMITED TO 10 FEET BEYOND THE SLOPE LIMITS.
2. USE J-HOOKS WHERE SILT FENCE CROSSES CONTOURS.
3. TEMPORARY CONSTRUCTION EXIT TO BE LOCATED BY THE ENGINEER.
4. DRAINAGE AREAS LOCATED ALONG THE NORTHERN PORTION OF THE SITE CONTAIN OFFSITE (CLEAN) WATER RUNOFF AND ARE TO BE CHanneLED THROUGH THE SITE WITH MINIMAL CONTACT WITH THE DISTURBED AREA. THE OFFSITE WATER DRAINAGE AREA IS AS FOLLOWS:
OUT-1 18.72 AC.
5. MAINTAIN 60 FT AVERAGE BUFFER FROM STREAM.